



# Reed Contact Magnetic Sensors Ø 8



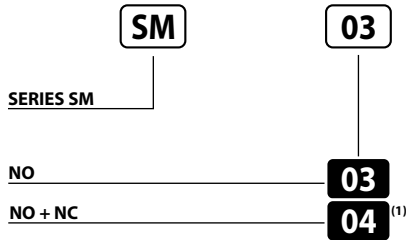
## REED CONTACT MAGNETIC PROXIMITY SENSORS

- Metal housing
- 2 mS delay on activation
- 2 m integral cable
- Choice of magnet targets

## SM Series

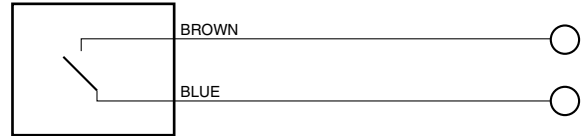


### Identification code

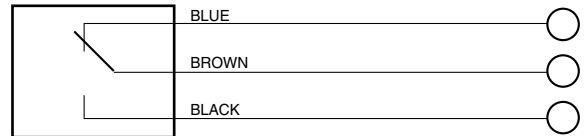


### Wiring diagrams

#### NO CONTACT



#### NO + NC CONTACT

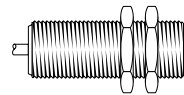


MAX. VOLTAGE	230 V AC
MAX. CURRENT	0.5 A
POWER	10 W/VA
SWITCHING FREQUENCY	200 Hz
DELAY ON ACTIVATION	2 mS
REPEATABILITY	± 0.3 mm
TEMPERATURE LIMITS	-25 ÷ +70°C
PROTECTION DEGREE	IP 67
CABLE LENGTH	2m
CABLE SECTION	3 x 0.50 mm <sup>2</sup>
HOUSING MATERIAL	Nickel-plated brass

(1) 175V

### Reed contact sensor / magnet switching distance (mm)

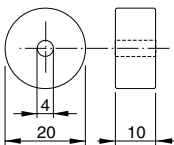
**DIAMETER 8**  
Distance Hysteresis



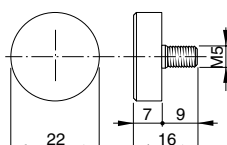
Distance	Hysteresis	Magnet Target
24	5	MG01
22	5	MG02
6	2,5	MG03
32	5	MG04
29	5	MG05

### Magnets dimensions (mm)

MG01 (Ferrite)

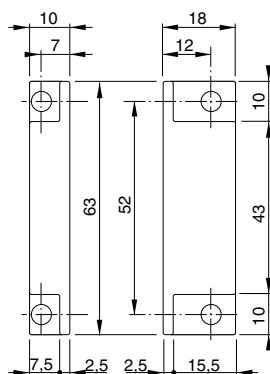


MG02 (Ferrite)



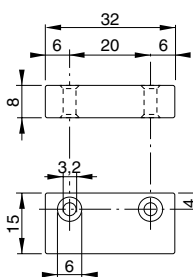
MG05

(Ferrite in plastic housing)



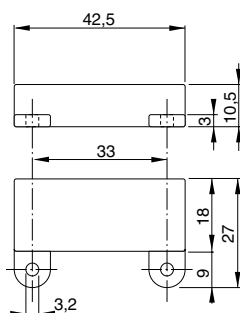
MG03

(Alnico in aluminium housing)



MG04

(Ferrite in plastic housing)



### Dimensions (mm)

